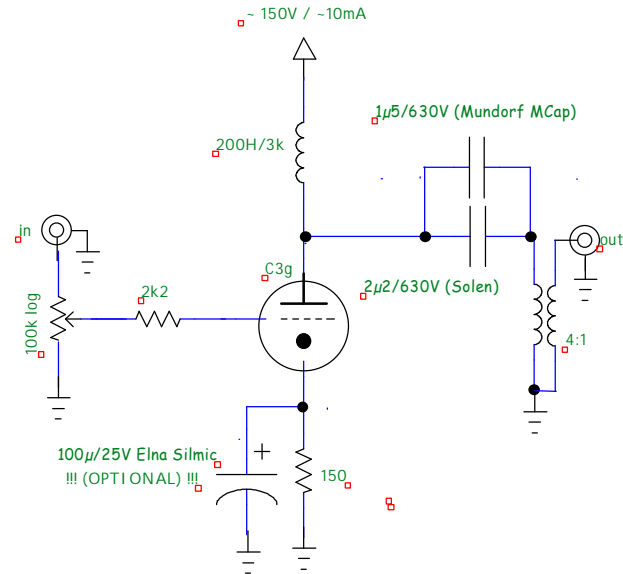
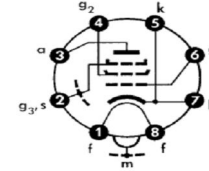


3uridiCGe PreAmp (1 channel)


based on the famous EURIDICE circuit of Ciro Marzio, Cristiano Jelasi & Luca Chimenti



C3g wired as Triode
g2 -> a # g3 -> k



!!! All R's 2W unless otherwise noted !!!




Disclaimer

No responsibility is taken for the correctness of the schematics. They are partly simplified (no fuses, no mains switches...)
Furthermore ANY commercial use is PROHIBITED without written permission of the respective owner.

More info at www.valviac.com
Read the impreZZm

!!! USE AT YOUR OWN RISK !!!



Title		
3uridiCGe (Line-PreAmp)		
Author		
www.valviac.com		
File		Document
D:\USERS\valviac\cad-schematics\3uridiCGe.dsn		
Revision	Date	Sheets
1.0	19. Sep. 2009	1 of 1